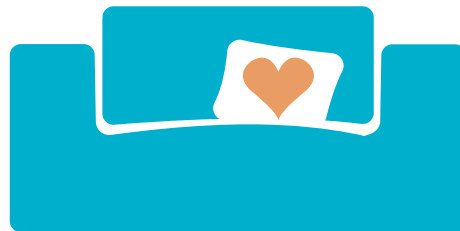


2022 IMPACT REPORT



Community Warehouse Project of **CHESTER COUNTY**

Chester County's Only Furniture Bank

A LETTER From Our Executive Director



Dear Community Warehouse Project Supporters,

2022 was our fifth year of operations and we are amazed every day at the continued and growing support from the community donating their gently used furniture and housewares to our program. We served over 400 families, free of charge, and were able to supply our clients with almost everything they requested each and every time.

We expanded our staff to include a second full time employee. Kristen Sweeney is now our Program Administrator, calling clients to review their requests and schedule deliveries of the donations. Kristen tags the appropriate items for the client. This includes beds, dressers, sofas, dining tables & chairs, lamps, dishes, pots and pans, etc. Deliveries are made within a day or two (at most) of the client getting the keys to their new house. When the furniture arrives, the house becomes a home.

CWP has been blessed with many loyal, passionate volunteers that work hard to make furnishing new homes possible. We have a steady crew that packages and labels the linens, fixes broken furniture, reupholsters chairs, sorts through donations, and helps our donors on our Drop Off Days (3rd Saturday each month). The volunteers work hard and they do it with a smile knowing they are making a huge difference in the lives of adults and children throughout our community.







Personally, I feel honored lending a 'hand up' to our neighboring families in need while meeting so many kind and generous donors who also feel honored to help make a house a home of hope. I have the best of all worlds.

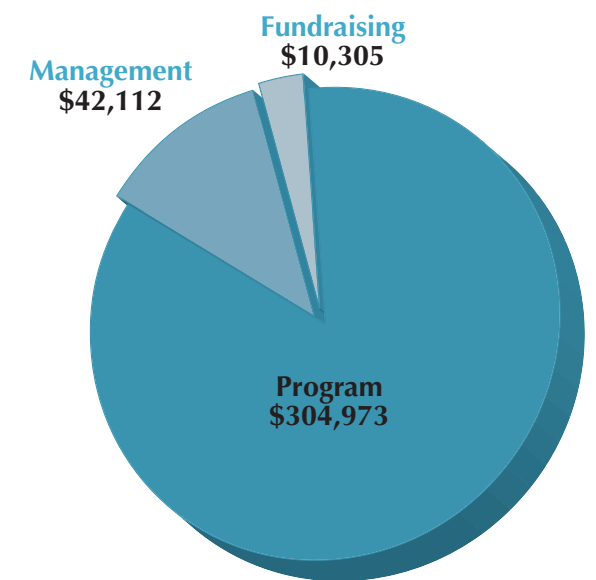
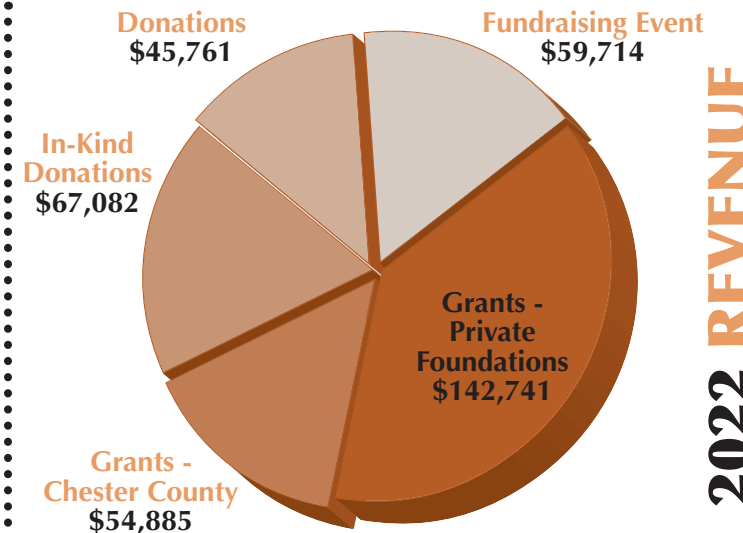
Thank you for your support of our families and veterans!

Glenda K. Brion
CEO/Executive Director

DELIVERING Our Mission

2022 AT A GLANCE

 Households Served:	400+
 Beds Provided:	530
 Individuals Served:	600+
 Children Served:	825
 Veterans Served:	72
 Partner Agencies:	48



KIND WORDS From Those We've Helped

"My kids slept so nice and cozy in their new beds last night, it made all the difference. My son is in love with his new comforter. The service you provide is such a blessing."

- CWP client, mother of 3 young boys

"I don't think people realize the impact that CWP has for both the clients and homeless case managers. Finding the building is one thing but when you tell them there are people who can help make those 4 walls a home, people almost fall down."

-Stephanie Romanoff, BVAA (Brandywine Valley Active Aging)

"I just wanted to reach out to you and thank you once again for all the help. Our apartment finally feels like at home. I cried like a baby after the guys (movers) left. It has been such a tough journey for my family since the flood in September and I am so grateful for all of you at CWP. So thank you so much again."

- CWP client who lost most of her household possessions in the wake of Hurricane Ida flooding

TOP 10 REFERRING AGENCIES

- Veterans Administration
- Maternal and Child Health Consortium
- Human Services, Inc.
- Kennett Area Community Service
- Friends Association

- Children, Youth & Families
- Family Service of Chester County
- Community Youth and Women's Alliance
- Domestic Violence Center of Chester County
- Chester County Housing Authority

WAYS TO HELP

GIVE FURNITURE

Every couch, bed, table, pot, and plate we send home with a client was donated by a neighbor like you. You can drop off your new or gently-used household items at or schedule a pickup on our website.

DONATE FUNDS

While furniture is the “what” of our mission, dollars are the “how”. Your donation directly funds the spaces, tools, and staffing necessary to connect essential home furnishings to neighbors who need it most. Whether you give now, monthly, or through your legacy, you ensure our ability to deliver our mission every day. Visit our website to learn more.

VOLUNTEER

The daily presence of volunteers in our Warehouses is what keeps the spirit of community alive inside our walls. And the effort of corporate and local volunteer groups carries the spirit of CW out into our community. Visit our website to learn about the many ways you or your group can get involved

THANK YOU TO OUR VOLUNTEERS That Make Our Mission Possible:

Frank Sterns
Jeannie McGinn
Stephanie Ciccarelli
Jack Yoder
Margaret Neilon

Sandra Lehr
Anna Anderko
Pam Oulahan
Helen & Tom
Mac Neilon



Penny LeBuffe
Randy Lindel
The Friars Society
Charlie Delune
Cindy & Gary Lieberman

Art Burritt
Christine Polywacz
Sarah Kuyeran
Kathy Lamaina
And many more.....



Community Warehouse Project
of **CHESTER COUNTY**

P.O. Box 218
West Chester, PA 19380
(484) 473-4360

gbrion@communitywarehouseproject.com

communitywarehouseproject.com

BOARD OF DIRECTORS

Glenda Brion
Executive Director

Paul LeBuffe
President
Aperture Education LLC

Valerie Jester
Vice President and Treasurer
Brandywine Capital Associates, Inc.

Catherine Friedman
Secretary
Principled Money Mangement

John Lilley
JBD Musicworks/ The Hooters

Mark Sammarone
Arthur Hall Insurance

Kevin Conrad, Esquire
Lamb McErlane PC

Matthew Walsh
VisionQuest 21